

KITZ SCT

PFM Series

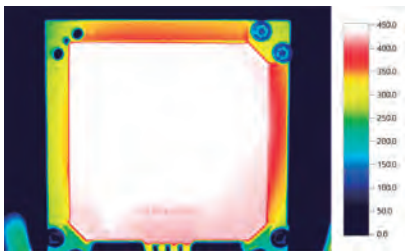
PFA Infrared (IR) Fusion Machine



Features

Adopts high-performance heater

Adopts an aluminum nitride heater high with thermal uniformity, realizing uniform temperature distribution on both surfaces. Automatic temperature control enables long-term stable welding.



Temperature distribution measurement by thermography

Wide working range

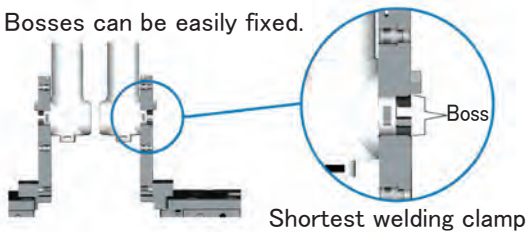
Compatible with handling workpieces with complex shapes as there are no obstructions on the plane surface of the welding area.



Enables shortest welding

The shortest welding can be performed by using our TBN series of PFA welding joints, special-purpose clamp jigs*, and special-purpose cutting jigs*, which enables compact piping layout.

*Sold separately



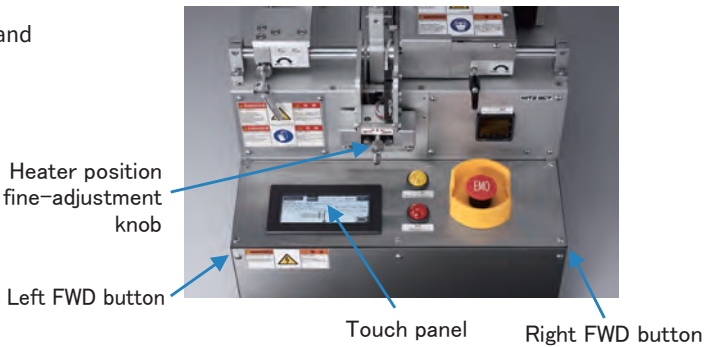
Improves operability

Operation guides are displayed on the touch panel, which enables easy operation welding. Operability is improved by FWD button placement on both the right and left sides and intuitive heater position adjustment mechanism, etc.

FWD button operation specifications

With operability independent of using a dominant hand, operation specifications for safety measures can be set.

Operation specification	Operation method
S: Single switch operation (basic specification)	Press the right FWD or left FWD button.
D: Double switch operation (optional specification)	Press the right FWD and left FWD buttons simultaneously.



Welding conditions registration, notification function

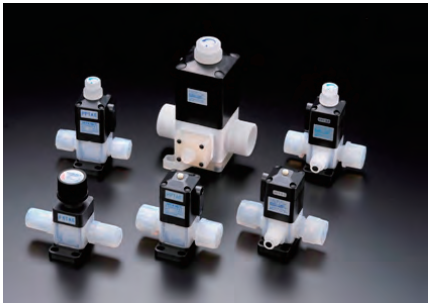
Up to 50 patterns can be user-registered. There is a function to notify the approximate welding time by buzzer.

Number of patterns of welding conditions registered

Item	Patterns
Number of user-registrable conditions	50
Welding conditions for reference (unchangeable)	10



Touch panel display screen (in English notation)



Specifications

Item	Specifications
Dimensions	Main body: W430 x D450 x H480 mm(W16.93 x D17.72 x H18.90 inch) (excluding projections) Carrying case: W496 x D510 x H571mm(W19.53 x D20.08 x H22.48 inch) (Top : H448.5mm(17.66inch)/bottom : 122.5mm(4.82 inch)
Weight	Main body: Approx. 28kg Carrying case: Approx. 13kg
Power supply	Single-phase AC 200 – 240V, 50/60Hz, 660VA
Heater	Aluminum nitride heater (heat resistance: 600°C)
Welding targets	Our TB series and TBN series of PFA tubes and fittings Size: 1/4" to 1 1/2"
Operating environment	Temperature: 10 – 35°C Humidity: 25 – 85%RH with no condensation From the aspect of welding quality, use in a clean room is recommended.
Standard accessories	Carrying case Special-purpose angle gauge Positioning plate Power cable

Options

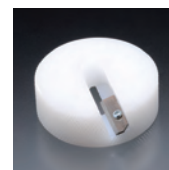
Product name	Type
Clamp jig	PWM – CB □
Cutting jig	BFC – □ i
Shortest welding cutting jig	BFC – s □ i
Shortest welding clamp jig	PWM – SCB □ *1
Power cable	– *2

*1 Dedicated to the TBN series. Contact our sales representative for details.

*2 The power cable is replaceable. The power cable is sold separately.
Contact our sales representative for details.

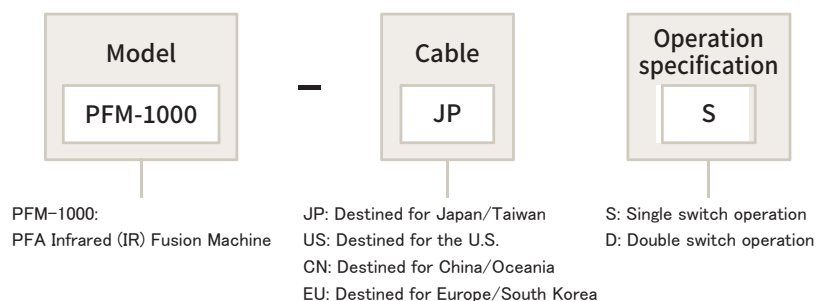


Clamp jig



Cutting jig

Type





Caution

Product specifications and performance values described in this catalog are based on our design calculations, in-house testing, product usage performance and public standards and specifications, and are posted as a user's guide under general usage conditions of the product. If the product is used outside of the described usage conditions or under special usage conditions, you should receive our technical advice in advance or it will be necessary to first conduct research and evaluation for performance verification at the users' own responsibility. Even if physical or personal damage occurs without use of the procedure, we shall assume no responsibility. Although this catalog has been edited with the utmost care possible, contact us if there are any unclear points if you come across any questionable matter. In addition, information described in this catalog will be revised without notice due to reasons that include correction of errors, supplement/improvement of insufficient content, improvement in product performance design change, and discontinuation of production of products, etc., when deemed necessary. This invalidates the product catalog of the previous version. The issue code is described in the back of your catalog. For product selection, contact us to confirm whether your catalog is the latest version. In addition, when exporting our products, exporters should obtain an export permit from the Ministry of Economy, Trade and Industry based on the provisions of the Export Trade Control Order of the "Foreign Exchange and Foreign Trade Act." Contact us regarding any unclear points.

■ Sales Office

KITZ SCT HEADQUARTERS : +81-3-6404-2171

KITZ SCT AMERICA CORPORATION : +1-408-747-5546

KITZ SCT CORPORATION TAIWAN
REPRESENTATIVE OFFICE : +886-3-542-0110

KITZ SCT CORPORATION OF KUNSHAN,
SHANGHAI BRANCH COMPANY : +86-21-5243-5025

■ Factory

KITZ SCT CORPORATION OF KUNSHAN : +86-512-5735-0700

For information on our locations, please visit the following website.



KITZ SCT corporation Headquarters
Tokyo Shiodome Building, 1-9-1, Higashi-Shimbashi, Minato-ku,
Tokyo 105-7305, Japan
<https://en.kitzsct.com/>



WebSite